

# Install guide for Kinman Tele pickups (3C) in original harness.

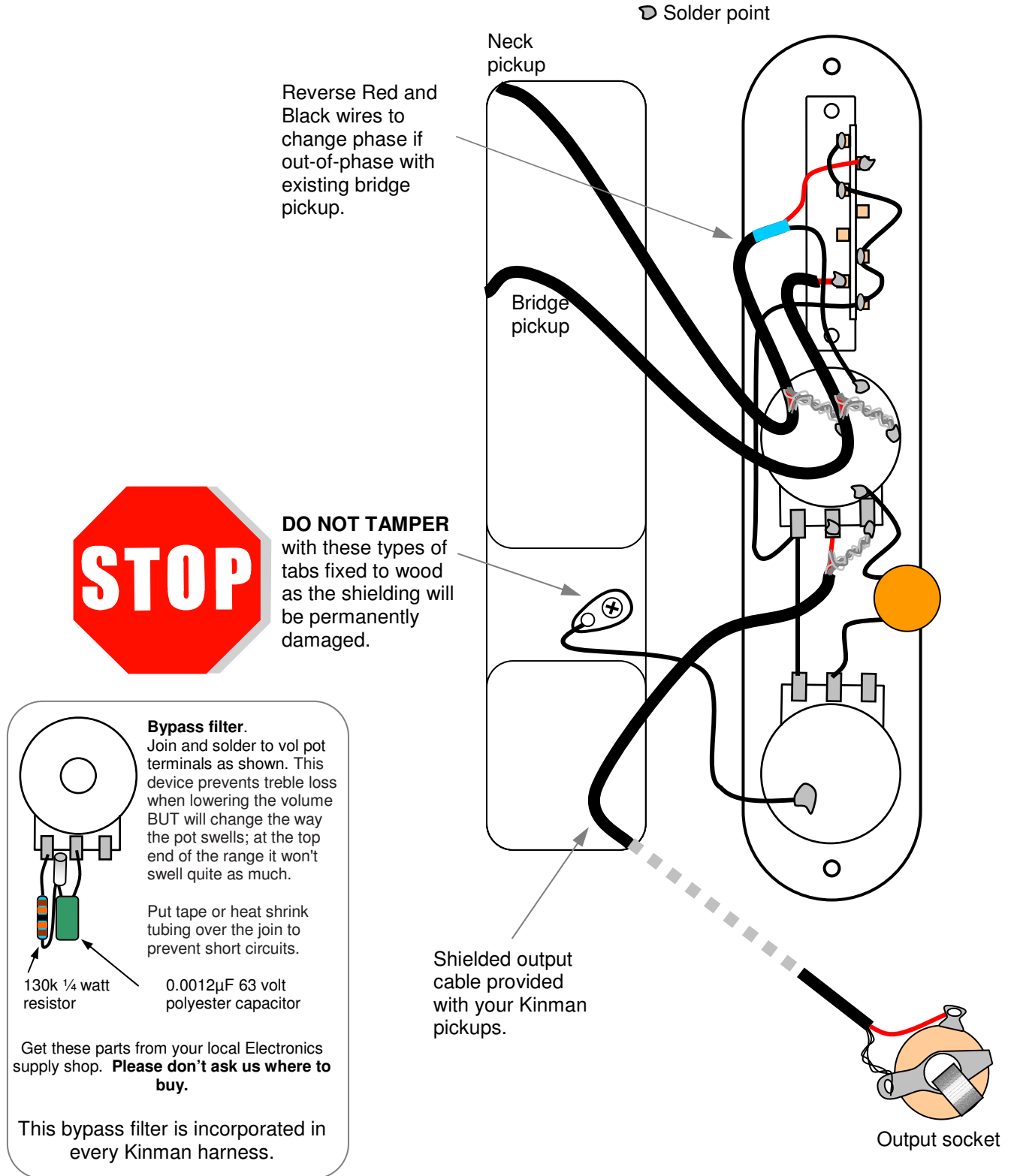
2-July-08 Rev-4 Online version

Step 1. Sketch the connections of the existing pickups on page 2.

**Note:** the original existing wiring does not have to appear exactly as it does in the diagram.

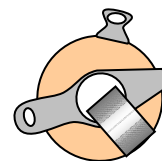
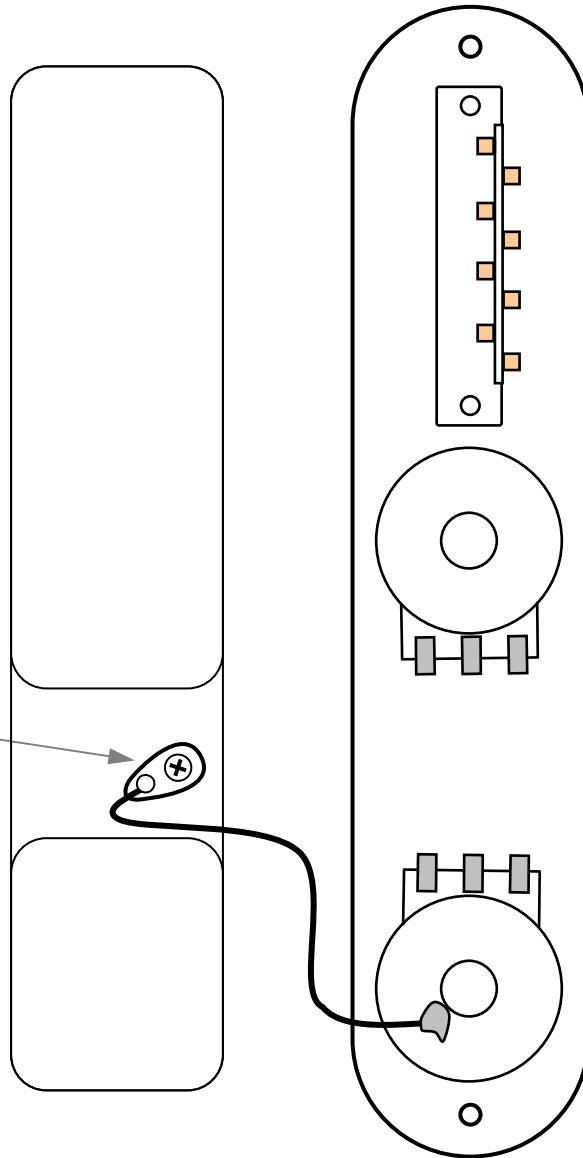
Step 2: De-solder original pickups from Harness.

Step 3. Install the new pickups and solder wires as shown in the diagram.



Sketch your original connections on this page before you dismantle anything. Use the same connections for the new pickups.

**DO NOT TAMPER** with these types of tabs fixed to wood as the shielding will be permanently damaged.



Output socket